

# ODIN

**OUTAGE • DATA • INITIATIVE • NATIONWIDE**

***A NETWORK OF ELECTRIC UTILITY RESILIENCE LEADERS***



## Problem:

Outage data from utilities is valuable to customers, neighboring utilities, and regional emergency management partners, but data is too often **fragmented**, **unavailable**, and/or **lacking commonalities**

## Solution:

ODIN is a network of **leading electric service providers** who are committed to providing **comprehensive interoperable power outage data** that enables utilities and others to **exchange data freely** with designated stakeholders at all levels — helping restoration, reliability, risk mitigation, emergency response, and more



ODIN OUTAGE DATA  
INITIATIVE NATIONWIDE



# THE ODIN NETWORK



Seattle City Light



CenterPoint  
Energy



Beltrami Electric  
Cooperative Inc.



Portland General  
Electric



PUGET  
SOUND  
ENERGY



Runestone Electric  
ASSOCIATION



Millie Lacs Energy Cooperative



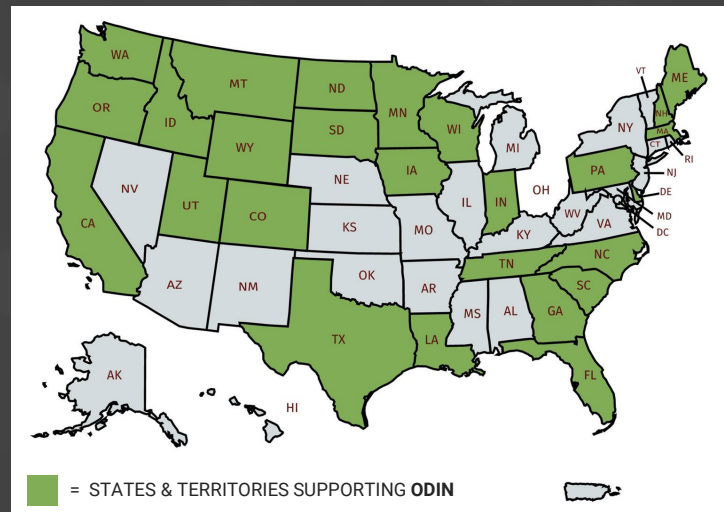
BRUNSWICK ELECTRIC





# WHITE HOUSE CALL TO ACTION

- Join the ODIN effort expand real-time collection of data to all **50 states and Puerto Rico**
- Commit to sharing data by **December 9, 2022** to be highlighted at the **White House Electrification Summit** on December 14, 2022





# BENEFITS OF DATA SHARING

- 1 Spend less time on the phone in an emergency, allowing you to concentrate on crucial restoration efforts
- 2 Control and authoritatively share your data using ODIN
- 3 Save lives in underserved communities and for the electricity-dependent
- 4 Unlock opportunities for federal funding
- 5 Commit to leading on transparent sharing and resilience





# ON THE SAME PAGE WHEN IT MATTERS

ODIN standardization allows you to effortlessly share authoritative, real-time data with:



NEIGHBORING UTILITIES



EMERGENCY MANAGEMENT



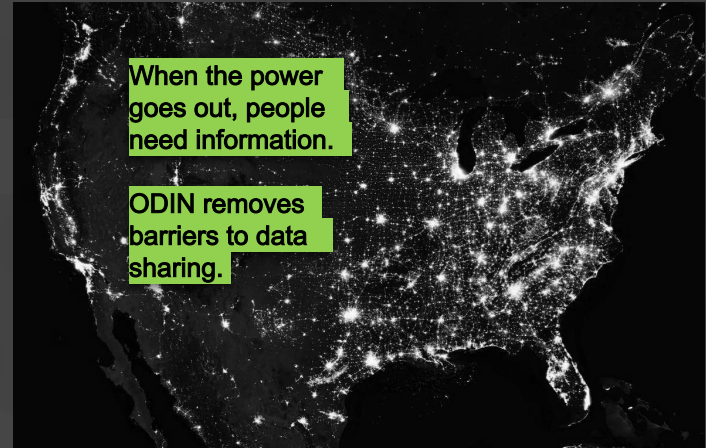
GENERAL PUBLIC



# ELECTRIFICATION IS A FEDERAL PRIORITY

To meet climate goals, we need to transition to a net-zero grid and accelerate electrification. In the future, half of U.S. energy use may come from electricity, versus 21% today.

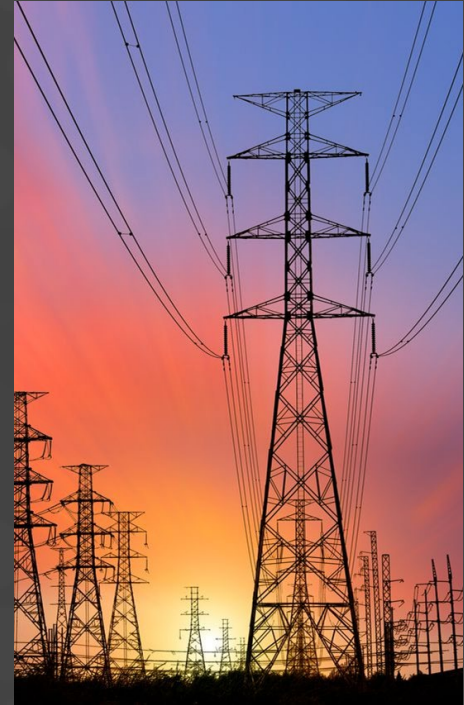
- The Bipartisan Infrastructure Law earmarks **\$65 billion** to upgrade the national power infrastructure through 2030 and beyond
- The Inflation Reduction Act authorizes **\$369 billion** in funding for climate change-related and clean energy initiatives





# FEDERAL FUNDING

Funding Source	Funding Amount	Purpose
Grid Resilience Innovation Partnership program (GRIP) (BIL)	<b>\$10.5 Billion</b> to Utilities and Related Operators, participation, and <b>ODIN</b> participation is a <b>Program Policy Factor</b> in Topic Area 1, Grid	Support innovative approaches to transmission, storage, and distribution infrastructure to enhance grid resilience and reliability.
Inflation Reduction Act	<b>\$40 billion</b> in loan authority	Transmission expansion projects and emerging technologies, including HVDC deployment and GETS manufacturing and deployment.





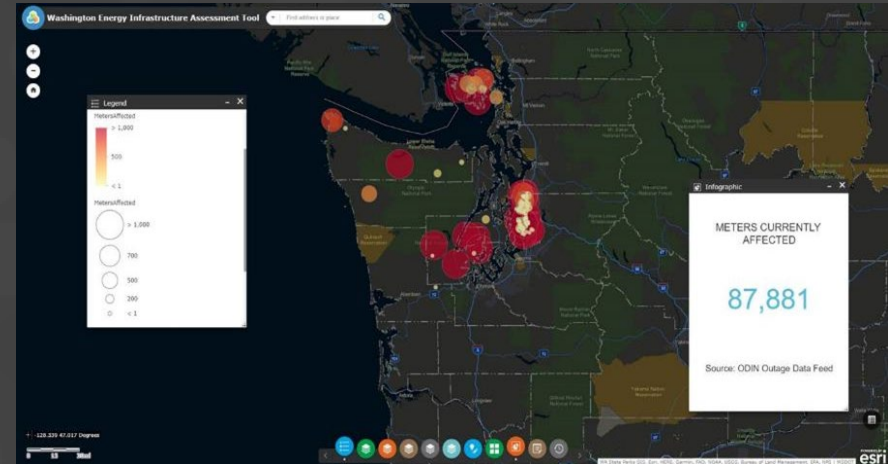
CASE  
STUDY

# SEATTLE CITY LIGHT + WASHINGTON

## Collaborative efforts operational since 2021

WASHINGTON ENERGY  
INFRASTRUCTURE  
ASSESSMENT TOOL

- Seattle City Light can monitor outages from storms and other events in a single “pane of glass”, including wildfire and utility service territories
- SCL measures real-time operational status changes due to high-impact events, infrastructure, county status, and other factors
- This supports resilience planning and coordinates mitigation planning between utilities and local emergency management



© Washington State Department of Commerce

CASE  
STUDY

# MINNESOTA RURAL ELECTRIC ASSOCIATION

A statewide association representing 50 not-for-profit coops

85%

of Minnesota's Landmass

$\frac{1}{3}$  Pop.

of Minnesotans Served

138k Miles

of Electric Line

Standardized outages provide visibility to multiple stakeholders



"Creating a state-wide map of outage data will benefit stakeholders in Minnesota before, during, and after high-impact grid and weather events."

~ Darrick Moe, President & CEO, Minnesota Rural Electric Association




**ODIN** OUTAGE DATA  
INITIATIVE NATIONWIDE



# PARTICIPATION MADE EASY

Integrate through your outage data vendor

Contact [odin@ornl.gov](mailto:odin@ornl.gov) today to see if your vendors support the ODIN standard



# INTEGRATION OPTIONS

## Standards

- Common Information Model (CIM) IEC 61968-3
- MultiSpeak v4.1 (and greater)

## Methods

- Vendor Supported Integration
- ESB Integration
- Utility Development via API



As fast as a 30-minute integration setup  
One-on-one support available at no additional cost



# SECURE EXCHANGE OF DATA

The **Outage Data Initiative Nationwide** is part of the the U.S. Department of Energy and Oak Ridge National Lab



Oak Ridge National Laboratory is managed by UT-Battelle LLC for the U.S. Department of Energy







# COMMIT TO LEAD RESILIENCE TODAY

1. Fill out and send the Participation Letter to ODIN
2. The ODIN team will schedule a 30-minute kickoff meeting
3. Commitments made by December 9, 2022 will be announced in a White House Fact Sheet and at the Electrification Summit

**VISIT [ODIN.ORNL.GOV](https://odin.ornl.gov)**